

Cloudpath Enrollment System Microsoft Certificate Authority Configuration Guide, 5.4

Supporting Cloudpath Software Release 5.4

Copyright, Trademark and Proprietary Rights Information

© 2019 ARRIS Enterprises LLC. All rights reserved.

No part of this content may be reproduced in any form or by any means or used to make any derivative work (such as translation, transformation, or adaptation) without written permission from ARRIS International plc and/or its affiliates ("ARRIS"). ARRIS reserves the right to revise or change this content from time to time without obligation on the part of ARRIS to provide notification of such revision or change.

Export Restrictions

These products and associated technical data (in print or electronic form) may be subject to export control laws of the United States of America. It is your responsibility to determine the applicable regulations and to comply with them. The following notice is applicable for all products or technology subject to export control:

These items are controlled by the U.S. Government and authorized for export only to the country of ultimate destination for use by the ultimate consignee or end-user(s) herein identified. They may not be resold, transferred, or otherwise disposed of, to any other country or to any person other than the authorized ultimate consignee or end-user(s), either in their original form or after being incorporated into other items, without first obtaining approval from the U.S. government or as otherwise authorized by U.S. law and regulations.

Disclaimer

THIS CONTENT AND ASSOCIATED PRODUCTS OR SERVICES ("MATERIALS"), ARE PROVIDED "AS IS" AND WITHOUT WARRANTIES OF ANY KIND, WHETHER EXPRESS OR IMPLIED. TO THE FULLEST EXTENT PERMISSIBLE PURSUANT TO APPLICABLE LAW, ARRIS DISCLAIMS ALL WARRANTIES, EXPRESS OR IMPLIED, INCLUDING, BUT NOT LIMITED TO, IMPLIED WARRANTIES OF MERCHANTABILITY AND FITNESS FOR A PARTICULAR PURPOSE, TITLE, NON-INFRINGEMENT, FREEDOM FROM COMPUTER VIRUS, AND WARRANTIES ARISING FROM COURSE OF DEALING OR COURSE OF PERFORMANCE. ARRIS does not represent or warrant that the functions described or contained in the Materials will be uninterrupted or error-free, that defects will be corrected, or are free of viruses or other harmful components. ARRIS does not make any warranties or representations regarding the use of the Materials in terms of their completeness, correctness, accuracy, adequacy, usefulness, timeliness, reliability or otherwise. As a condition of your use of the Materials, you warrant to ARRIS that you will not make use thereof for any purpose that is unlawful or prohibited by their associated terms of use.

Limitation of Liability

IN NO EVENT SHALL ARRIS, ARRIS AFFILIATES, OR THEIR OFFICERS, DIRECTORS, EMPLOYEES, AGENTS, SUPPLIERS, LICENSORS AND THIRD PARTY PARTNERS, BE LIABLE FOR ANY DIRECT, INDIRECT, SPECIAL, PUNITIVE, INCIDENTAL, EXEMPLARY OR CONSEQUENTIAL DAMAGES, OR ANY DAMAGES WHATSOEVER, EVEN IF ARRIS HAS BEEN PREVIOUSLY ADVISED OF THE POSSIBILITY OF SUCH DAMAGES, WHETHER IN AN ACTION UNDER CONTRACT, TORT, OR ANY OTHER THEORY ARISING FROM YOUR ACCESS TO, OR USE OF, THE MATERIALS. Because some jurisdictions do not allow limitations on how long an implied warranty lasts, or the exclusion or limitation of liability for consequential or incidental damages, some of the above limitations may not apply to you.

Trademarks

ARRIS, the ARRIS logo, Ruckus, Ruckus Wireless, Ruckus Networks, Ruckus logo, the Big Dog design, BeamFlex, ChannelFly, Edgelron, FastIron, HyperEdge, ICX, IronPoint, OPENG, SmartCell, Unleashed, Xclaim, ZoneFlex are trademarks of ARRIS International plc and/or its affiliates. Wi-Fi Alliance, Wi-Fi, the Wi-Fi logo, the Wi-Fi CERTIFIED logo, Wi-Fi Protected Access (WPA), the Wi-Fi Protected Setup logo, and WMM are registered trademarks of Wi-Fi Alliance. Wi-Fi Protected Setup™, Wi-Fi Multimedia™, and WPA2™ are trademarks of Wi-Fi Alliance. All other trademarks are the property of their respective owners.

Contents

Overview of Issuing Certificates with the Integration Module for Microsoft CA.....	4
Integration Module Specifications.....	5
Recommendation.....	5
Deployment Requirements.....	5
Deployment Process.....	5
What You Need.....	5
Configuring Cloudpath.....	6
Create a Microsoft CA Certificate Template.....	6
Downloading the Integration Module.....	8
Configuring the Web Server.....	8
Verify Role Services.....	9
Set Up the Integration Module Website.....	10
Testing the System.....	12
Troubleshooting.....	12
DNS.....	12
CA Name.....	12
ASP.NET Installed on the IIS Server.....	12
ASP Hosting Permissions.....	12
Restart the IIS Server.....	14

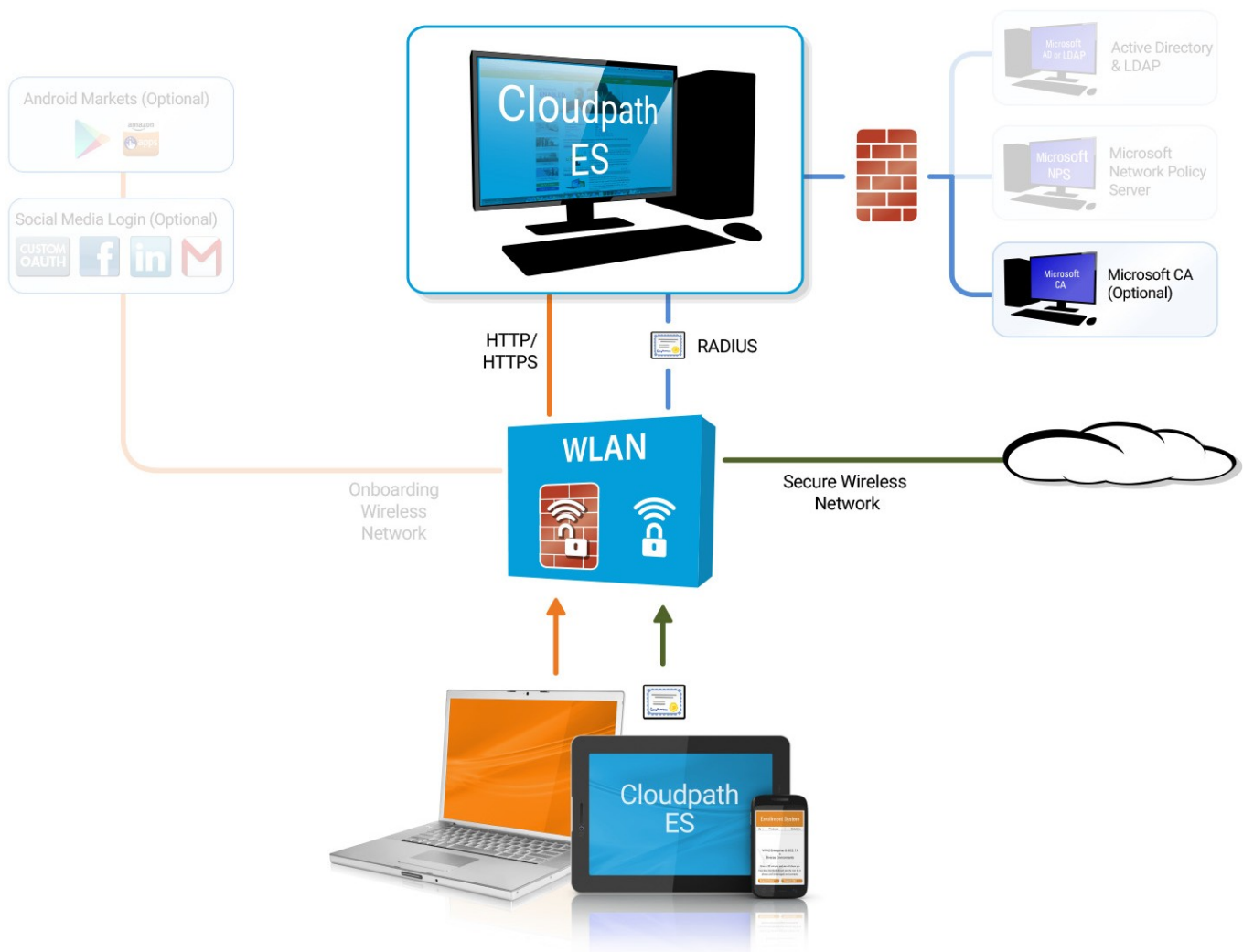
Overview of Issuing Certificates with the Integration Module for Microsoft CA

To implement certificate-based authentication on your WPA-2 Enterprise and 802.1X network, through EAP-TLS, you must set up a certificate infrastructure, which includes a certificate authority (CA) for issuing client certificates.

The Cloudpath Integration Module for Microsoft CA allows Cloudpath to request TLS client certificates from your existing Microsoft CA infrastructure.

While configuring a user's device, Cloudpath prompts the user for credentials. It then generates a CSR, authenticates to the CA, and sends the CSR to the CA via the Integration Module. The Integration Module, in coordination with the CA, authenticates the user and, if valid credentials are provided, signs a certificate for the user. The characteristics of the certificate generated are dictated by the certificate template utilized. The certificate is then streamed back to the Cloudpath Wizard, which installs it and configures the SSID to utilize it.

FIGURE 1 Cloudpath Integration Module for Microsoft CA



NOTE

The Integration Module for Microsoft CA is essentially a sibling to the Microsoft Network Device Enrollment Service (NDES). Unlike Microsoft NDES, which assigns all certificates to the SCEP_ADMIN user account, the Integration Module assigns each issued certificate to the corresponding user account.

Integration Module Specifications

Recommendation

It is recommended that you do not install the Integration Module on a domain controller. By default, you cannot run a web server on a domain controller unless you change policy settings. Also, users typically do not have LOGON_INTERACTIVE rights for domain controllers, as they do for other machines.

Deployment Requirements

- Install on a Windows Domain-joined Microsoft Windows 2008 R2 (IIS) or greater web server.
Other servers in the network including the CA and DC can be Windows 2003.
- The web server must meet Microsoft's minimum system requirements.
- The web server should contain a valid certificate to enable HTTPS communication.
- Optionally, the Integration Module can be installed directly onto the CA or RA server.
- Cloudpath must be able to interact with the CA via a URL. It strongly recommend that this URL be HTTPS to provide web server authentication and a secure communication over your network.
- The website that contains the CA's web interface should be configured for appropriate Anonymous authentication.
- To allow communication between the Enrollment Server and the CA, ensure that your firewall is configured for ports 80/443 (HTTP/HTTPS).

Deployment Process

Perform the following steps to deploy the Integration Module for Cloudpath:

- [Configuring Cloudpath](#) on page 6
- [Downloading the Integration Module](#) on page 8
- [Configuring the Web Server](#) on page 8
- [Testing the System](#) on page 12

What You Need

You need the following information to set up the Integration Module for Microsoft CA:

- CA Host Name of the server with which the plug-in should communicate.
- CA Name, which is the primary label for the CA within the Certification Authority snap-in.
- Requires Attributes for the certificate template.

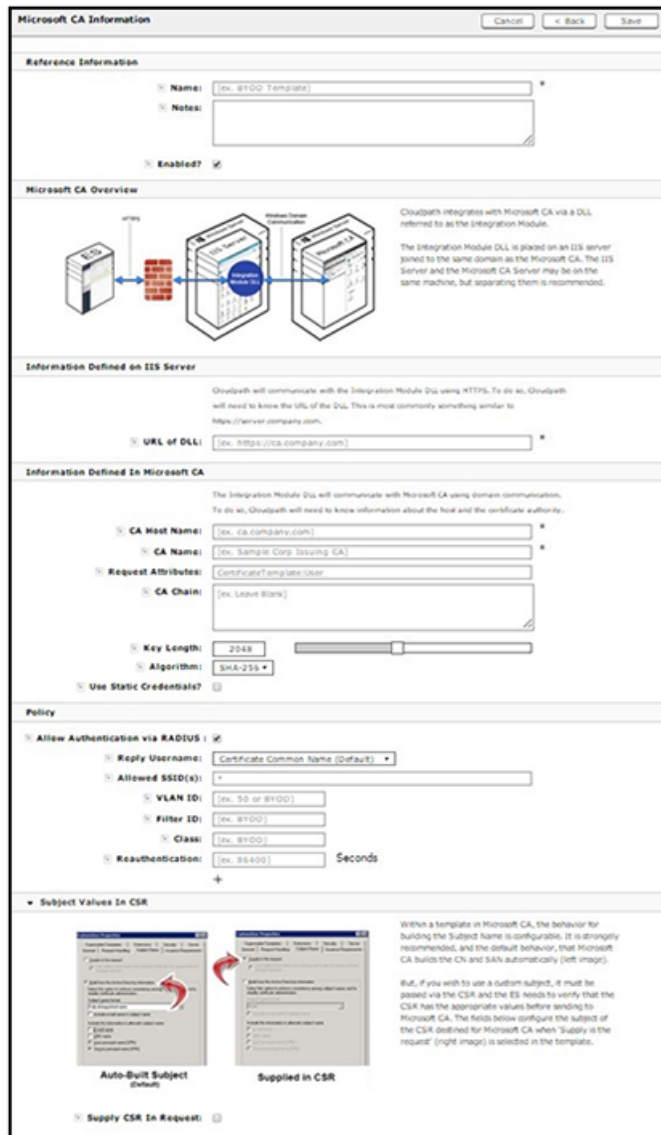
Configuring Cloudpath

Perform the following steps to set up a certificate template for the Microsoft CA. The certificate template allows the certificates to be pulled from the Microsoft CA.

Create a Microsoft CA Certificate Template

1. Navigate to **Certificate Authority > Manage Templates**.
2. Click **Add Template** to create a new certificate template.
3. Select **Use a Microsoft Certificate Authority**. Click **Next**.

FIGURE 2 Microsoft CA Certificate Template Information



4. Enter the URL of the DLL.

Cloudpath communicates with the Integration Module DLL using HTTPS, so Cloudpath needs to know the URL of the DLL.

NOTE

If you configure or change settings in the Microsoft CA certificate template, then you must download and install a new copy of the DLL and files.

5. On the Microsoft CA Information page, enter the Name and Notes for the certificate template, and Enable it for use.
6. Enter the Integration Module Configuration settings.

These are the required fields:

- CA Host Name: The DNS name of the CA server.
- CA Name: The name of the CA, which appears in the Certificate Authority console.

NOTE

The *CA Name* should be the name of the CA as displayed in the Certificate Authority snap-in. On Windows, it also displays in the **Issued By** field when a certificate is viewed in the CertMgr.

- Request Attributes: The attributes used when querying the CA. This typically includes, at a minimum, the certificate template name. For example, *Certificate Template:User*.

7. Enter the **Communication Information**, and click **Save**.

The Microsoft CA URL is a required field.

- Microsoft CA URL: Enter the URL where the Microsoft CA is installed. You must enter the complete URL, for example, **https://msft-ca.testcompany.com**.

TIP

If using multiple certificate templates with the Microsoft CA, the CA URL should reflect the certificate template name. For example, if you create one certificate template for staff and one for guests, the Microsoft CA URLs should be **https://msftca.testcompany.com/staff**, and **https://msft-ca.testcompany.com/guests**, respectively. See [Multiple Certificate Templates](#) on page 12.

- CA Chain: Specify the CA Chain. The client configuration must include the root, and if applicable, the intermediate CAs. The certificates should be concatenated together in PEM format.
- Key Length: The key length, as dictated by the CA, for certificate signing requests.
- Algorithm: The algorithm, as dictated by the CA.
- Use Static Credentials: By default, the system uses user-provided credentials when interacting with the Microsoft CA. Check this box if you want to configure static username and password to use when interacting with the Microsoft CA.

8. Specify policy information for the RADIUS server.

If enabled, the RADIUS server will contain policy information for this certificate template.

- Reply Username: The RADIUS server replies with the username based on the CN of the certificate but, additional options are available.
- Allowed SSID: Enter a regex, which defines the SSID(s) from which devices are allowed to authenticate.
- RADIUS Attributes: Specify a VLAN, Filter ID, Class, Reauthentication interval, or use the plus icon to add custom attributes.

9. Use the **Specify Subject Values in CSR** settings if you want to configure the subject of the CSR destined for Microsoft CA when the template is set to "Supply in request."

Downloading the Integration Module

Perform the following steps to download the Integration Module:


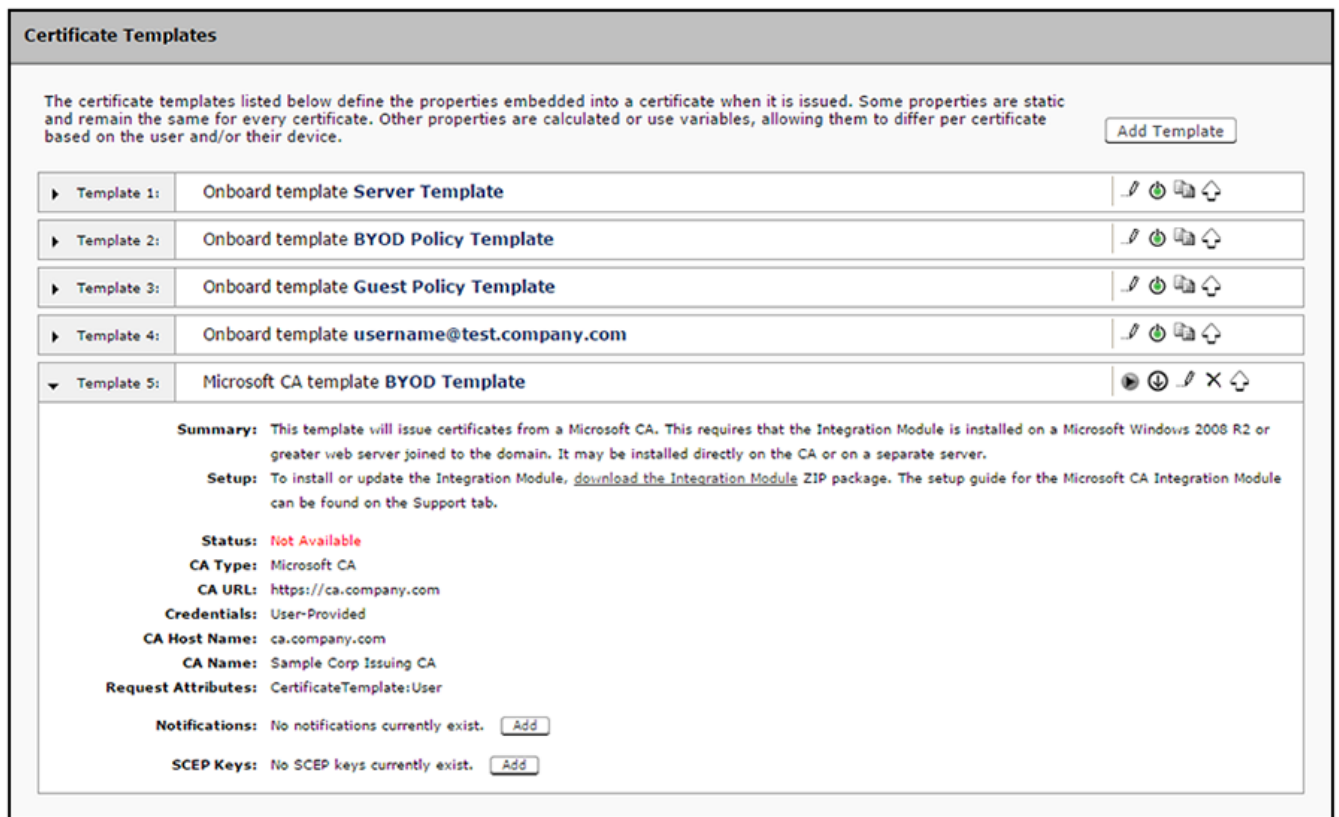
1. Go to **Certificate Authority > Certificate Templates**.
2. On the **Certificate Templates** page, click the download icon  to download the Integration Module.

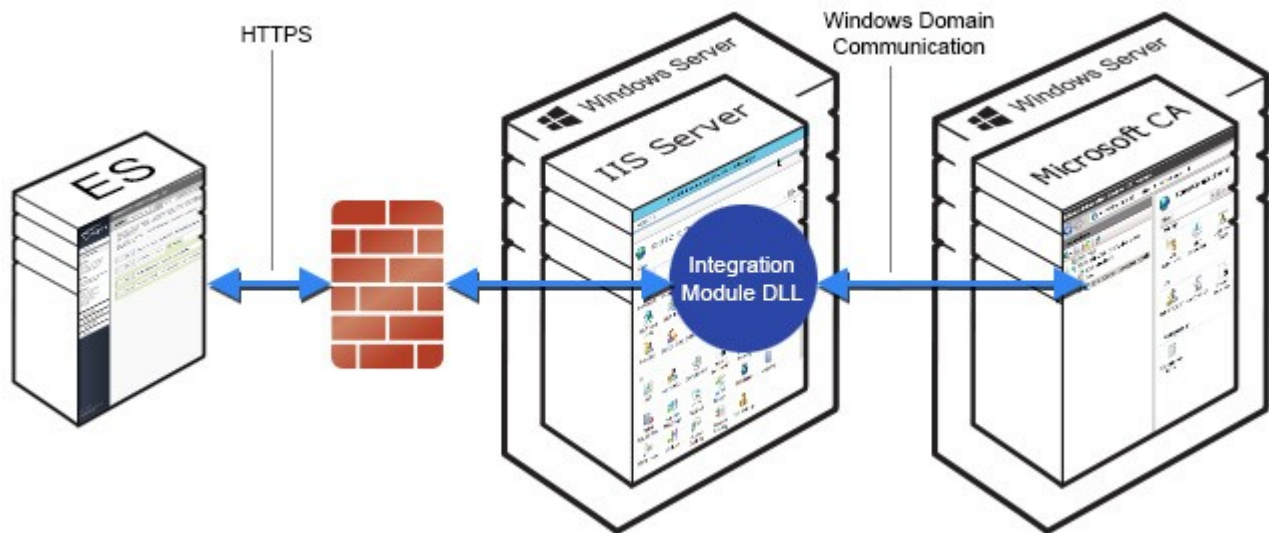
FIGURE 3 Download Integration Module for Microsoft CA



Configuring the Web Server

The following diagram illustrates how the different systems work together, including the communication ports between the components, and where the different pieces of data reside.

FIGURE 4 Example of Cloudpath with Microsoft CA in a Network



Perform the steps in the following procedures to set up your IIS server.

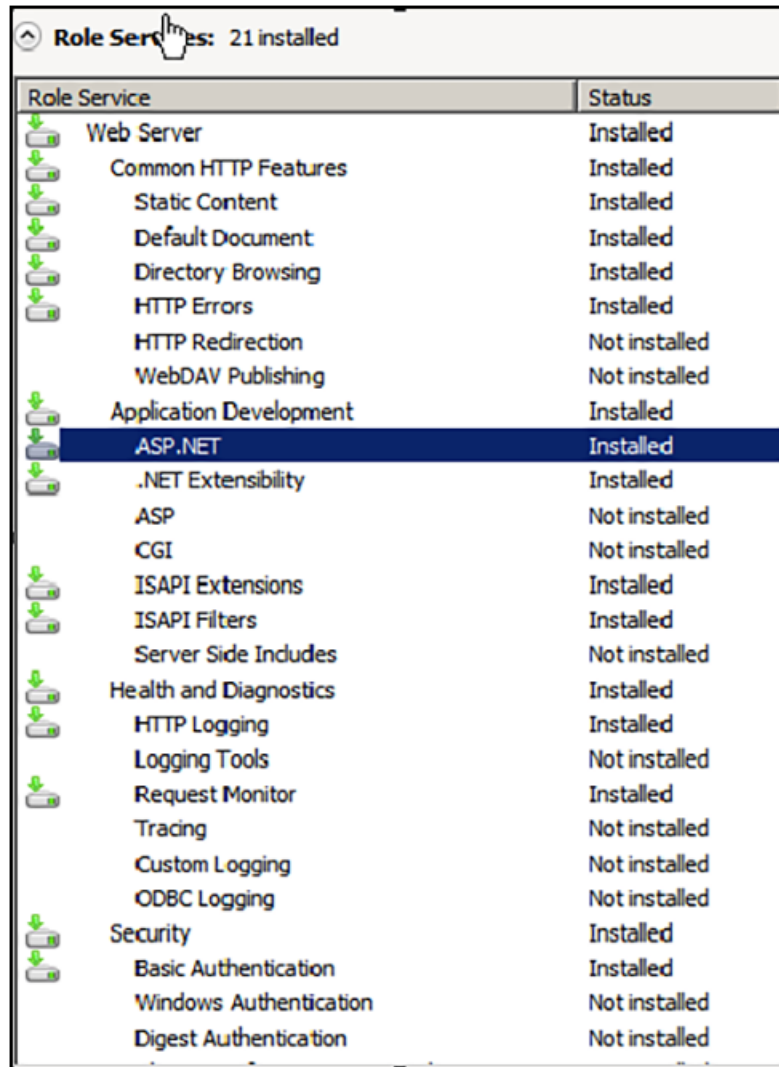
Verify Role Services

Perform the steps in this procedure to verify the role services in the Service Manager.

1. Open the Server Manager.

2. In the left tree view, expand **Roles**, and select **Web Server (IIS)**.

FIGURE 5 Role Services Installed on the IIS



The screenshot shows the 'Role Services' console window with a title bar that says 'Role Services: 21 installed'. A mouse cursor is pointing at the title bar. The main area contains a table with two columns: 'Role Service' and 'Status'. The 'ASP.NET' row is highlighted in blue.

Role Service	Status
Web Server	Installed
Common HTTP Features	Installed
Static Content	Installed
Default Document	Installed
Directory Browsing	Installed
HTTP Errors	Installed
HTTP Redirection	Not installed
WebDAV Publishing	Not installed
Application Development	Installed
ASP.NET	Installed
.NET Extensibility	Installed
ASP	Not installed
CGI	Not installed
ISAPI Extensions	Installed
ISAPI Filters	Installed
Server Side Includes	Not installed
Health and Diagnostics	Installed
HTTP Logging	Installed
Logging Tools	Not installed
Request Monitor	Installed
Tracing	Not installed
Custom Logging	Not installed
ODBC Logging	Not installed
Security	Installed
Basic Authentication	Installed
Windows Authentication	Not installed
Digest Authentication	Not installed

3. In the right window, scroll down to the **Role Services** section. In the list, locate *ASP.NET*, and verify that it has the *Installed* status.

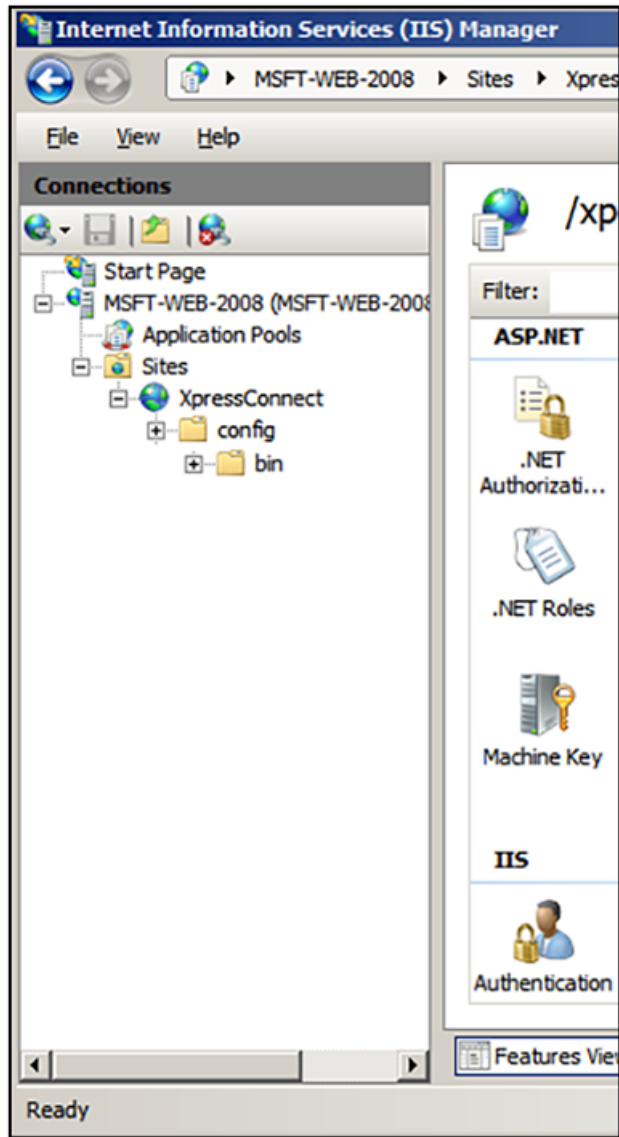
Set Up the Integration Module Website

To add the Integration Module Website, perform the following steps:

1. On the file system, locate the folder where the Integration Module will reside.
In most cases, the physical path is similar to `C:\inetpub\cloudpath`.
2. Create this folder and unzip the downloaded plug-in file into it.
The folder should contain the files `Default.aspx` and `Web.config`, among others.

3. In the IIS Manager, locate and select the **Sites** item in the left tree.
4. Right-click and select **Add Website**.
5. Name the site **Cloudpath**.

FIGURE 6 Site Structure in IIS Manager



6. Set the IP address, port, and host name appropriately.
7. Set the physical path to the folder created above (for example, `C:\inetpub\cloudpath`), and click **OK**.

Multiple Certificate Templates

If using multiple certificate templates (for example one for staff, `https://msft-ca.testcompany.com/staff`, and one for guests, `https://msft-ca.testcompany.com/guests`), create a parent application for `https://msft-ca.testcompany.com`, and two child applications for staff and guests.

NOTE


The parent and child applications must be set up with *Anonymous* Authentication Type.

In multiple certificate template configurations, the parent application cannot contain the plug-in files (`Default.aspx`, `Web.config`, etc.). You must download the plug-in files into the corresponding child application directories.

For example, download the plug-in files from the staff certificate template and place them in the `https://msft-ca.testcompany.com/staff` application directory, and download the plug-in files from the *guests* certificate template and place them in the `https://msft-ca.testcompany.com/guests` application directory.

Testing the System

To verify communication between Cloudpath and the Microsoft CA, perform the following steps:

1. From the **Certificate Templates** page, click the Test Integration Module icon .
2. On the **Test Microsoft CA** page, enter user credentials to verify Microsoft CA interaction with Cloudpath, and click **Continue**.

The **Microsoft CA Test** page displays the results of the query.

Troubleshooting

DNS

Verify that the Microsoft CA can resolve DNS.

CA Name

Verify that CA name is correct. The CA name is case-sensitive.

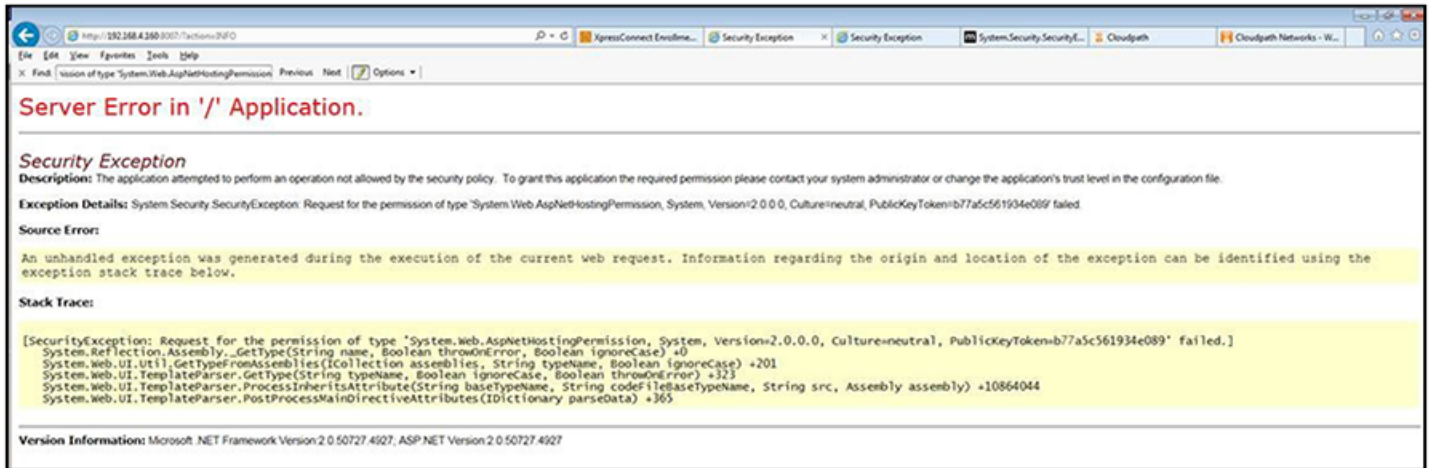
ASP.NET Installed on the IIS Server

If the Application Settings icon does not appear on the IIS server, verify that ASP.NET is installed on the IIS server. The entire ASP.NET icon set, which includes **Application Settings**, will not display if ASP.NET is not installed.

ASP Hosting Permissions

If you receive the following *Security Exception* error when trying to access `http://site/?action=INFO`, this typically indicates that the web server cannot use the files.

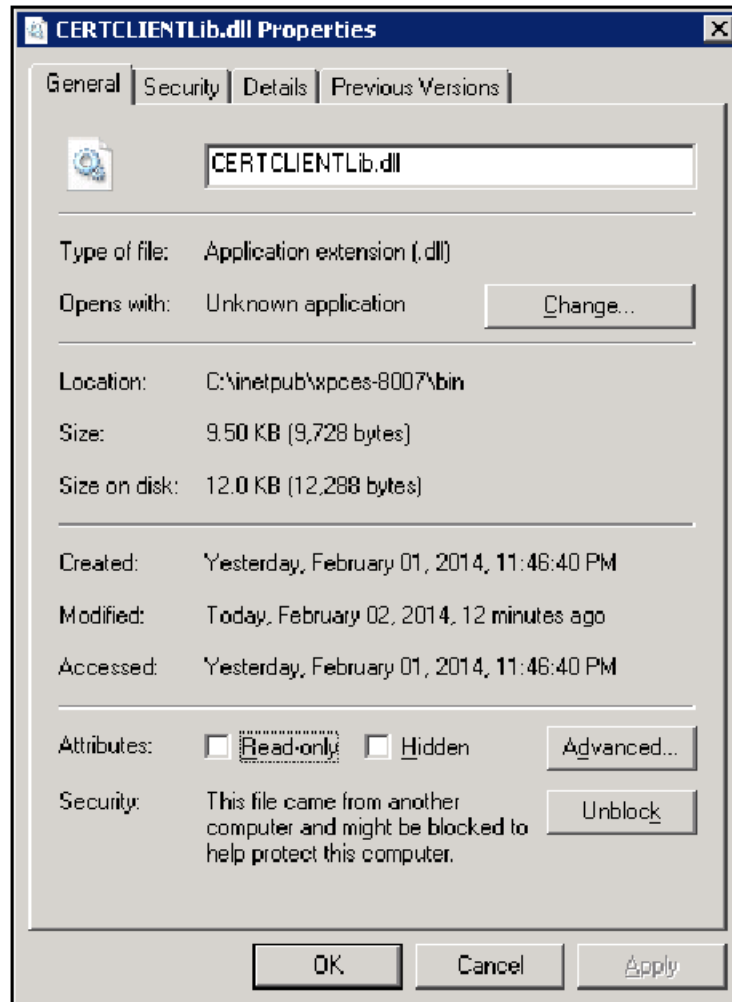
FIGURE 7 Security Exception Error



The key piece of information in this error message is *System.Web.AspNetHostingPermission*. When Internet Explorer encounters the files in the Integration Module zip files, it flags them as originating from the Internet, and blocks them.

To verify this, right-click one of the Integration Module files and view the **Properties**. With the **General** tab selected, in the **Security** section, you see a message: This file came from another computer and might be blocked to help protect this computer.

FIGURE 8 Integration Module Zip Files Properties



To correct this issue, check each file in the directory and *Unblock* any files that are listed as *Blocked*.

Restart the IIS Server

To apply these changes, the IIS Server must be restarted from the root node.

NOTE

Restarting the application does not apply the changes. You must restart the IIS server from the root node.



© 2019 ARRIS Enterprises LLC. All rights reserved.
Ruckus Wireless, Inc., a wholly owned subsidiary of ARRIS International plc.
350 West Java Dr., Sunnyvale, CA 94089 USA
www.ruckuswireless.com